

G.F.Handel

Flute Suite

from The Water Music

Arranged for Guitar Quartet
by
Andrew Forrest

The famous Water Music, first performed on a barge on the River Thames in 1717, is composed of a series of 3 suites written for different groups of instruments.

The flute Suite, originally in G major, was written for flute, piccolo, violins, viola and violoncello.

*In the event of a public performance, please include
the arranger's name on the programme*

<http://www.forrestguitarembles.co.uk>

Flute Suite

from *The Water Music*

G.F.Handel
Arranged for Guitar Ensemble
by Andrew Forrest

1. Allegro

11

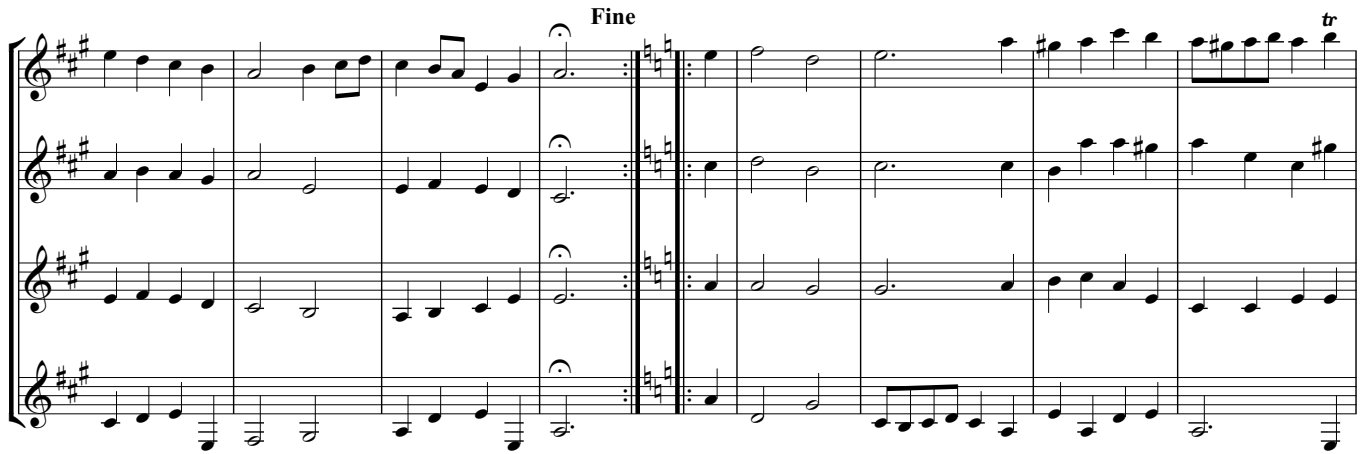
22

34

2. Presto

Gtr1
Gtr2
Gtr3
Gtr4

9



Musical score system 1, featuring four staves. The key signature is three sharps (F#, C#, G#). The system includes a double bar line with repeat dots and the word "Fine" above the staff. A trill (tr) is indicated above the final note of the first staff.



Musical score system 2, featuring four staves. It begins with a trill (tr) above the first note of the first staff. The system concludes with a double bar line and repeat dots.



Musical score system 3, featuring four staves. This system contains a double bar line with repeat dots at the beginning and continues with musical notation across the staves.



Musical score system 4, featuring four staves. The system concludes with a double bar line and repeat dots, and the instruction "D.C. al Fine" is written above the staff.

3. Menuet I

Musical score for four guitars (Gtr1-Gtr4) in 3/4 time. The score consists of four staves. Gtr1 and Gtr2 play a melody of eighth and quarter notes. Gtr3 plays a bass line of quarter notes. Gtr4 plays a bass line of eighth notes. The key signature has one sharp (F#).

Musical score for four guitars (Gtr1-Gtr4) in 3/4 time. The score consists of four staves. Gtr1 and Gtr2 play a melody of eighth and quarter notes. Gtr3 plays a bass line of quarter notes. Gtr4 plays a bass line of eighth notes. The key signature has one sharp (F#).

Musical score for four guitars (Gtr1-Gtr4) in 3/4 time. The score consists of four staves. Gtr1 and Gtr2 play a melody of eighth and quarter notes, with trills indicated by wavy lines above the notes. Gtr3 plays a bass line of quarter notes. Gtr4 plays a bass line of eighth notes. The key signature has one sharp (F#).

4. Menuet II

Musical score for four guitar parts (Gtr1, Gtr2, Gtr3, Gtr4). The score is written in treble clef with a key signature of one sharp (F#). It consists of 12 measures. Gtr1 has a melodic line with some accidentals. Gtr2 and Gtr3 provide harmonic support with chords and moving lines. Gtr4 plays a steady bass line with eighth notes.

Musical score for four guitar parts, continuing from the previous system. It includes a first ending (1.) and a second ending (2.) leading to a 'Fine' marking. The first ending is a short melodic phrase, and the second ending is a more complex figure. The score concludes with a double bar line and repeat dots.

Musical score for four guitar parts, continuing from the previous system. This system contains the first system of the 'D.C. Menuet II al Fine' section. It features a more active melodic line in Gtr1 and a rhythmic bass line in Gtr4.

Musical score for four guitar parts, continuing from the previous system. This system contains the second system of the 'D.C. Menuet II al Fine' section. It concludes with a double bar line and repeat dots.

D.C. Menuet II al Fine

6. Country Dance

Musical score for four guitar parts (Gtr1, Gtr2, Gtr3, Gtr4) in common time. The first two parts (Gtr1 and Gtr2) feature complex rhythmic patterns with triplets and sixteenth notes. Gtr3 and Gtr4 play simpler, more rhythmic accompaniment. The score is in common time (C) and consists of four measures.

Musical score for four guitar parts in D major. The first two parts (Gtr1 and Gtr2) feature complex rhythmic patterns with triplets and sixteenth notes, including trills (tr). Gtr3 and Gtr4 play simpler, more rhythmic accompaniment. The score is in common time (C) and consists of four measures.

Musical score for four guitar parts in D major. The first two parts (Gtr1 and Gtr2) feature complex rhythmic patterns with triplets and sixteenth notes. Gtr3 and Gtr4 play simpler, more rhythmic accompaniment. Dynamics markings include *p* (piano) and *mf* (mezzo-forte). The score is in common time (C) and consists of four measures.

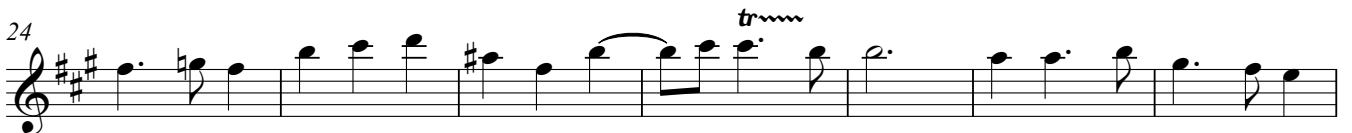
Musical score for four guitar parts in D major. The first two parts (Gtr1 and Gtr2) feature complex rhythmic patterns with triplets and sixteenth notes. Gtr3 and Gtr4 play simpler, more rhythmic accompaniment. The score is in common time (C) and consists of four measures.

Flute Suite

from *The Water Music*

G.F.Handel
Arranged for Guitar Ensemble
by Andrew Forrest

1. Allegro



2. Presto



Fine



D.C. al Fine

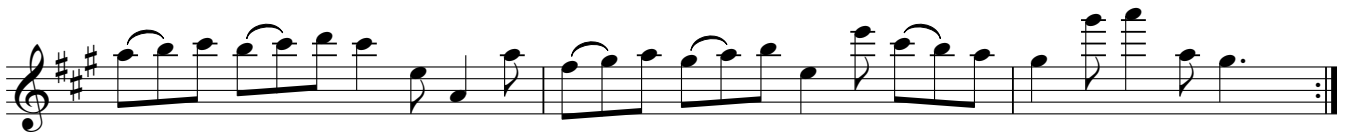
3. Menuet I

Musical notation for Menuet I, measures 1-12. The piece is in 3/4 time and G major. It begins with a treble clef and a key signature of one sharp (F#). The melody consists of eighth and quarter notes, with a trill in measure 10. The piece concludes with a repeat sign and a double bar line.

4. Menuet II

Musical notation for Menuet II, measures 1-12. The piece is in 3/4 time and G major. It begins with a treble clef and a key signature of one sharp (F#). The melody features a trill in measure 10. The piece concludes with a first ending (1.) and a second ending (2.) leading to a 'Fine' marking. Below the main notation, there is a section labeled 'D.C. Menuet II al Fine' which provides an alternative ending for the piece.

6. Country Dance



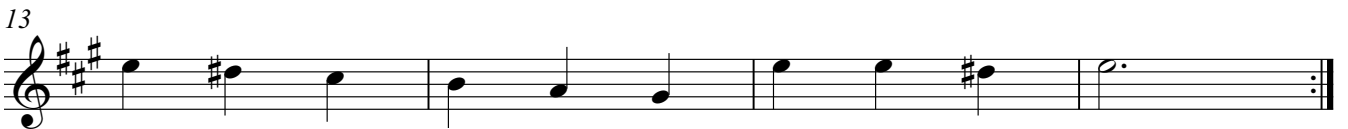
Guitar 2

Flute Suite

from The Water Music

1. Allegro

G.F.Handel
Arranged for Guitar Ensemble
by Andrew Forrest



2. Presto



3. Menuet I

Musical notation for Menuet I, measures 1-12. The piece is in 3/4 time and G major. It begins with a treble clef and a key signature of one sharp (F#). The melody consists of eighth and quarter notes, with a repeat sign at the end of the first line.

4. Menuet II

Musical notation for Menuet II, measures 1-12. The piece is in 3/4 time and G major. It begins with a treble clef and a key signature of one sharp (F#). The melody consists of eighth and quarter notes, with a repeat sign at the end of the first line. The second line includes first and second endings, with the second ending leading to a 'Fine' marking. The third line continues the melody, and the fourth line is labeled 'D.C. Menuet II al Fine'.

6. Country Dance

The musical score for '6. Country Dance' is written in treble clef with a common time signature (C). The piece begins with a series of eighth-note patterns, many of which are grouped as triplets. The first line contains four measures of eighth-note triplets. The second line continues with eighth-note patterns and includes a repeat sign. The third line features a trill (tr) on a note, followed by eighth-note patterns and a change in dynamics to piano (p). The fourth line shows a key signature change to three sharps (F#, C#, G#) and continues with eighth-note patterns. The fifth line concludes the piece with eighth-note patterns and a final repeat sign.

Flute Suite

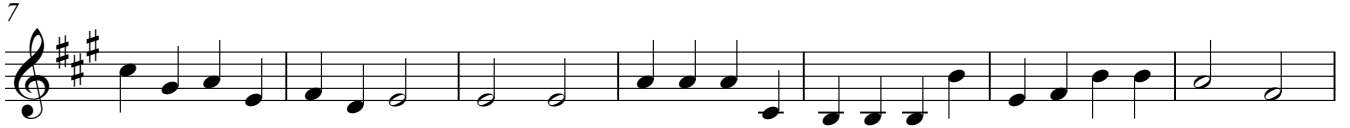
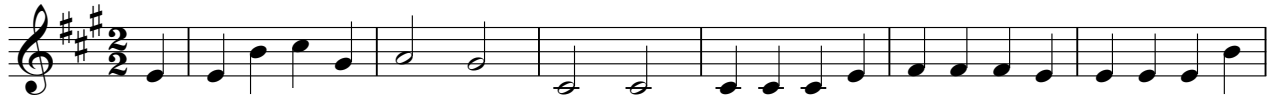
from The Water Music

G.F.Handel
Arranged for Guitar Ensemble
by Andrew Forrest

1. Allegro



2. Presto



3. Menuet I



4. Menuet II



D.C. Menuet II al Fine



6. Country Dance



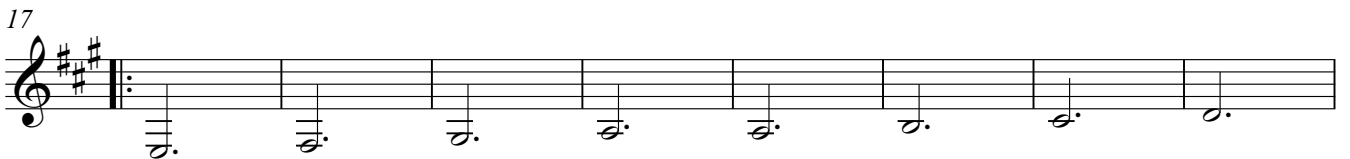
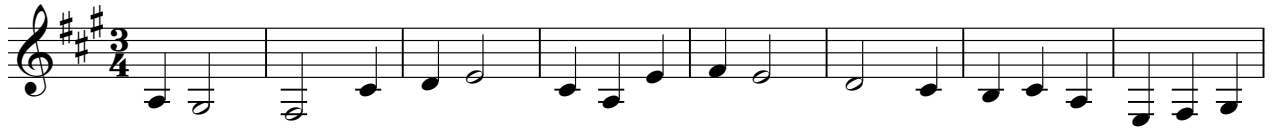
Guitar 4

Flute Suite

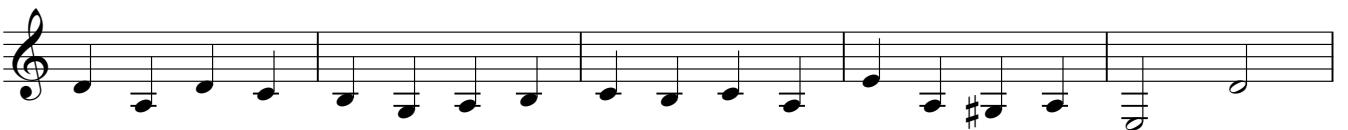
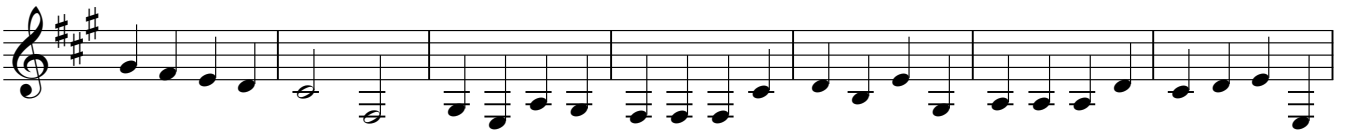
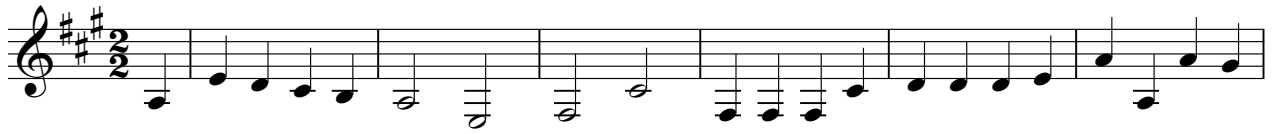
from The Water Music

G.F.Handel
Arranged for Guitar Ensemble
by Andrew Forrest

1. Allegro



2. Presto



3. Menuet I

Musical score for Menuet I, measures 1-12. The piece is in 3/4 time and G major. It consists of three staves of music. The first staff contains measures 1-4. The second staff contains measures 5-8, with a repeat sign at the beginning of measure 5. The third staff contains measures 9-12, ending with a double bar line and repeat dots.

4. Menuet II

Musical score for Menuet II, measures 1-12. The piece is in 3/4 time and G major. It consists of six staves of music. The first staff contains measures 1-4. The second staff contains measures 5-8. The third staff contains measures 9-12, with a first ending bracket over measures 9-10 and a second ending bracket over measures 11-12. The word "Fine" is written above the second ending. The fourth staff contains measures 13-16. The fifth staff contains measures 17-20. The sixth staff contains measures 21-24, ending with a double bar line and repeat dots. The instruction "D.C. Menuet II al Fine" is written above the final staff.

6. Country Dance

